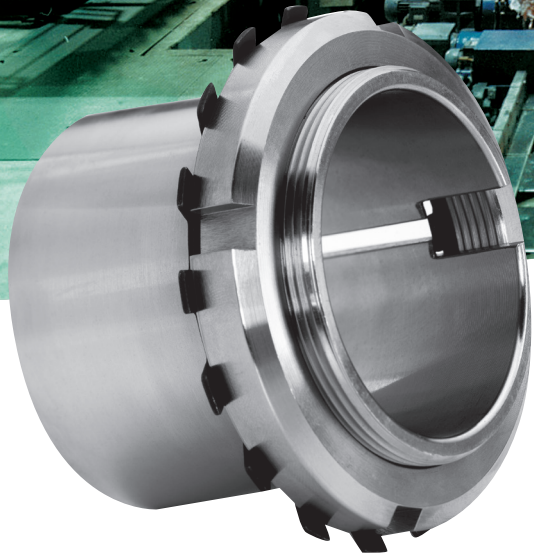
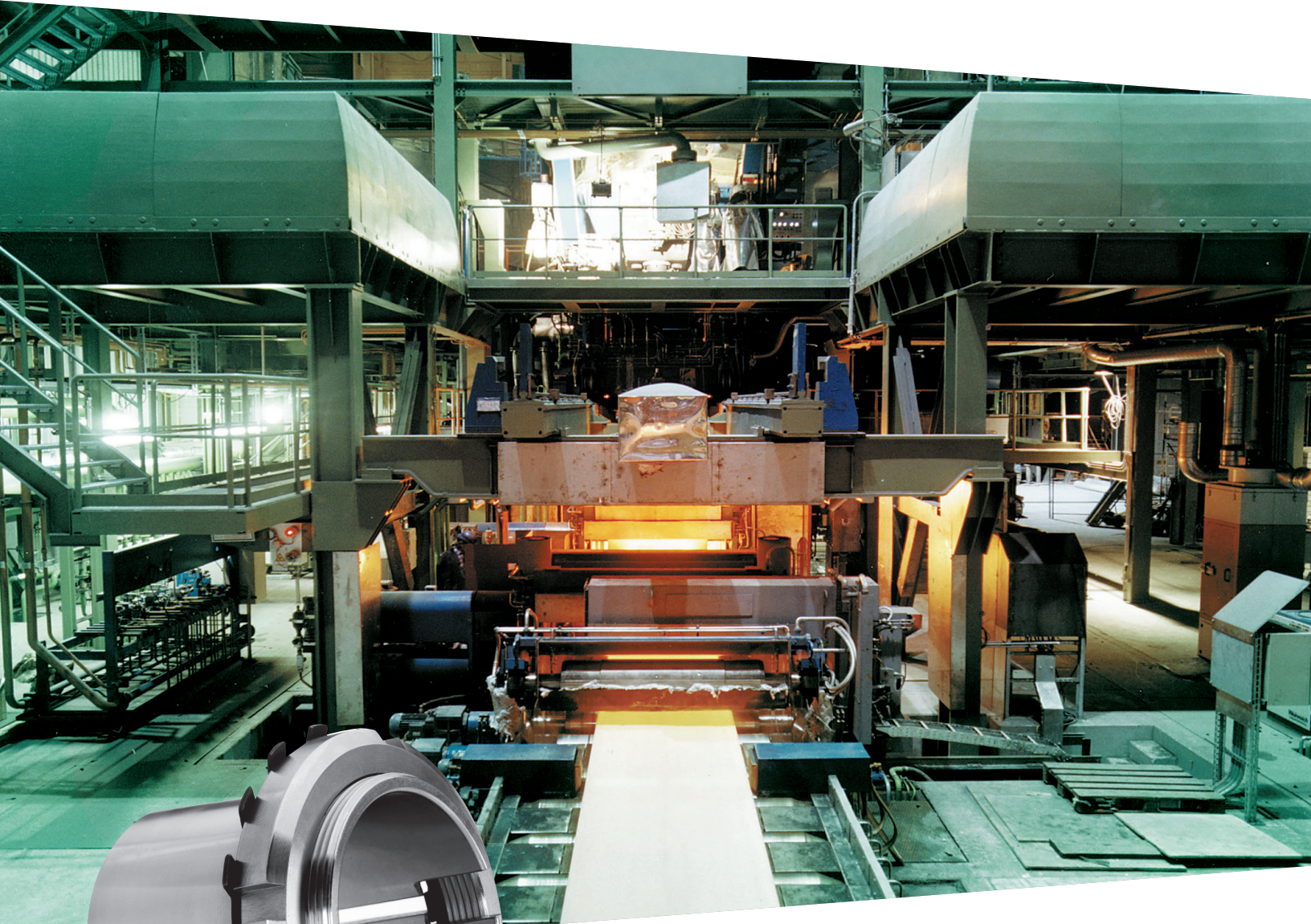


# Rollway Sleeves

ROLLWAY®



A Regal Brand

**REGAL**

# ROLLWAY® Adapter Sleeves

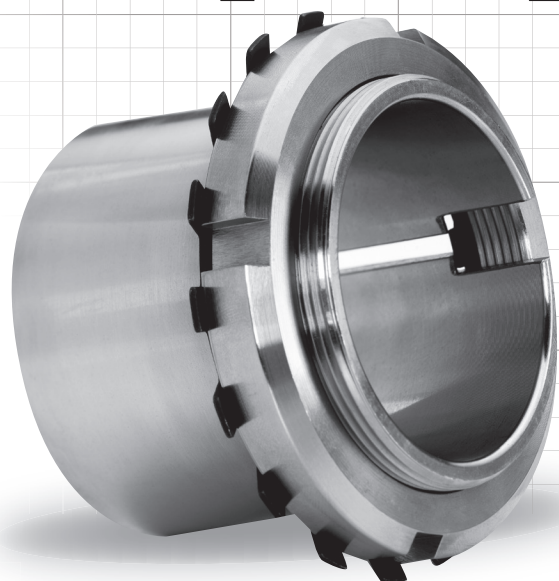
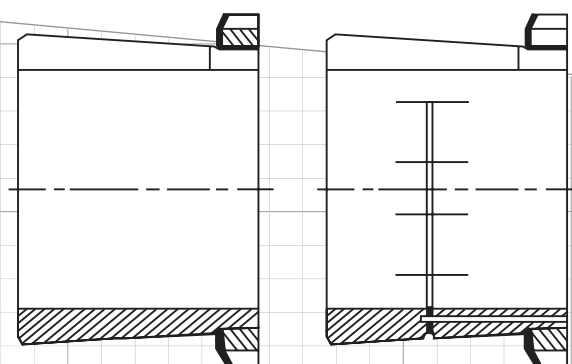
**H 204 AND UP | H 304 AND UP | H 2304  
AND UP | H 3024 AND UP | H 3120 AND UP  
H 3260 AND UP**

Rollway Adapter Sleeves are supplied complete with lock nut and locking device. The sleeves have a slotted design and an external taper of 1:12.

Adapter sleeves allow a simple positioning of bearings in any position.

## Remark

*Hydraulic sleeves are available for larger sizes ref: H...OH*



# ROLLWAY® Withdrawal Sleeves

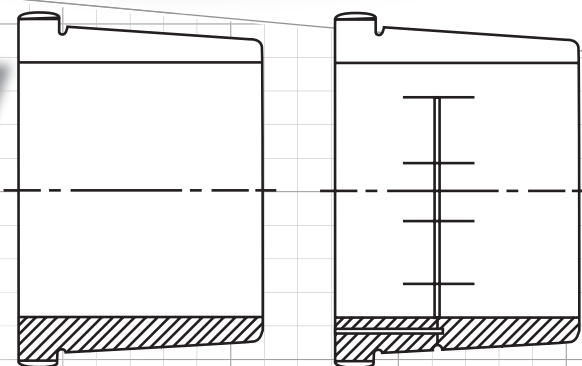
**AH 204 AND UP | AH 304 AND UP | AH 2304 AND UP  
AH 3024 AND UP | AH 3120 AND UP | AH 3260  
AND UP | AH 24024 AND UP | AH 24124 AND UP**

Rollway Withdrawal Sleeves have a slotted design and an external taper of 1:12, except AH 240 and AH 241 series, which have an external taper of 1:30.

The nuts required for dismounting are not supplied with the sleeves and must be ordered separately.

## Remark

*Hydraulic sleeves are available for larger sizes ref: AH...OH*

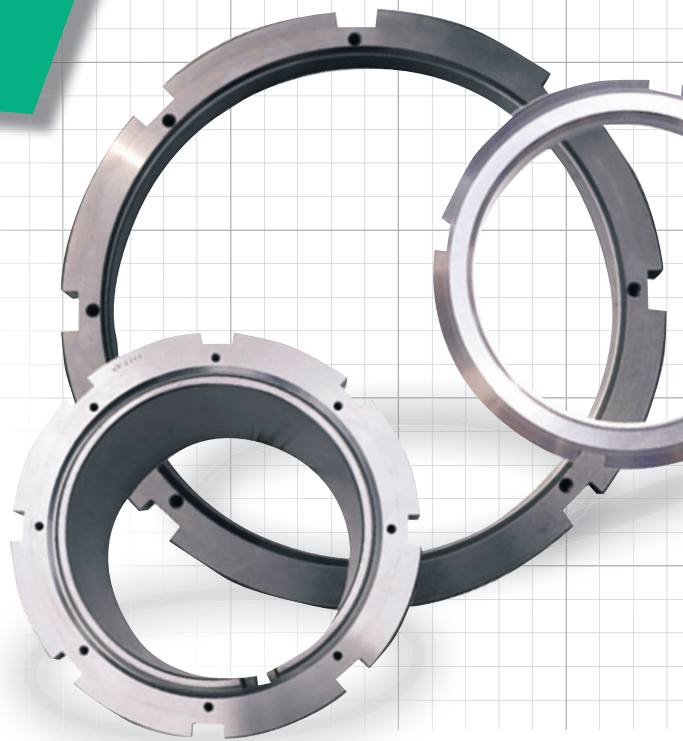
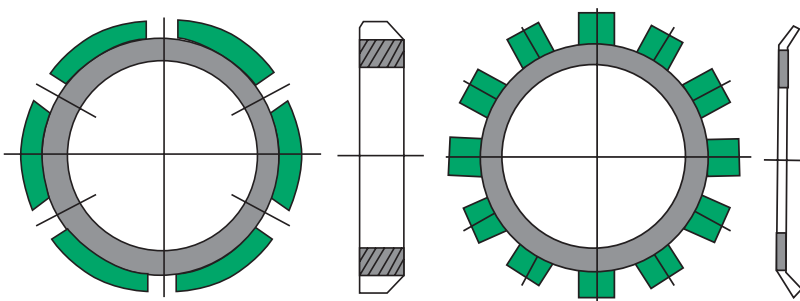




# ROLLWAY® Lock Nuts & Washers

## KM 0 AND UP | MB 0 AND UP

Lock Nuts (KM) and Washers (MB) are used to locate bearings and other components on shafts.



**Adapter (H) and Withdrawal Sleeves (AH)** are used to secure tapered bore bearings on cylindrical shafts.

They make the mounting and dismounting easier, and they often simplify the bearing arrangement design.

To make the fitting of larger bearings easier, both adapter and withdrawal sleeves can be provided with hydraulic lubrication grooves.

*Smaller Adapter and Withdrawal Sleeves, Lock Nuts and Washers (upto bore diameter 200mm) are phosphated on the surface (black). The bigger sizes are blank.*



## ROLLWAY.

Regal Power Transmission Solutions  
7120 New Buffington Road  
Florence, KY 41042  
Customer Service: 800-626-2120  
Fax: 800-262-3292  
Technical Service: 800-626-2093

[www.RegalPTS.com](http://www.RegalPTS.com)

#### APPLICATION CONSIDERATIONS

The proper selection and application of power transmission products and components, including the related area of product safety, is the responsibility of the customer. Operating and performance requirements and potential associated issues will vary appreciably depending upon the use and application of such products and components. The scope of the technical and application information included in this publication is necessarily limited. Unusual operating environments and conditions, lubrication requirements, loading supports, and other factors can materially affect the application and operating results of the products and components and the customer should carefully review its requirements. Any technical advice or review furnished by Regal Beloit America, Inc. and its affiliates with respect to the use of products and components is given in good faith and without charge, and Regal assumes no obligation or liability for the advice given, or results obtained, all such advice and review being given and accepted at customer's risk.

For a copy of our Standard Terms and Conditions of Sale, Disclaimers of Warranty, Limitation of Liability and Remedy, please contact Customer Service at 1-800-626-2120. These terms and conditions of sale, disclaimers and limitations of liability apply to any person who may buy, acquire or use a Regal Beloit America Inc. product referred to herein, including any person who buys from a licensed distributor of these branded products.

Rollway is a trademark of Regal Beloit Corporation or one of its affiliated companies.  
©2016 Regal Beloit Corporation, All Rights Reserved. MCB16004E • Form# 9606E • Printed in USA

A Regal Brand

**REGAL**

[www.regalbeloit.com](http://www.regalbeloit.com)