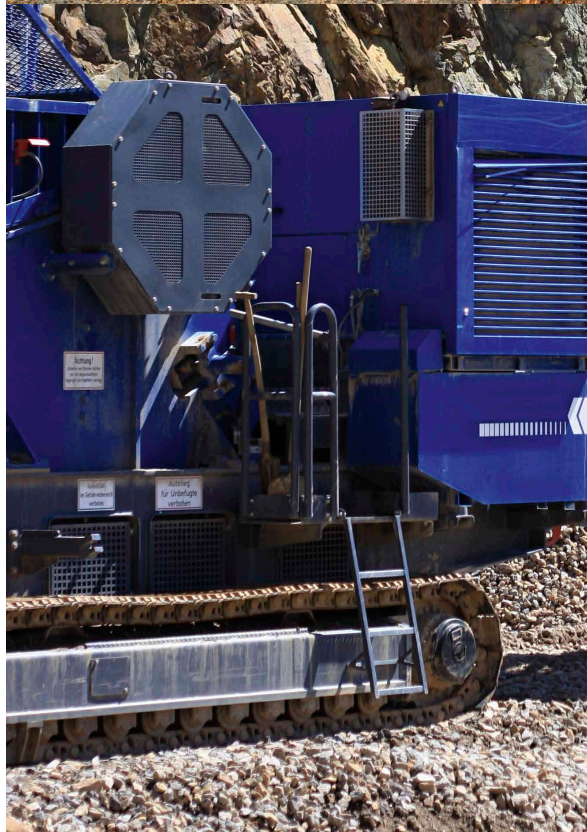
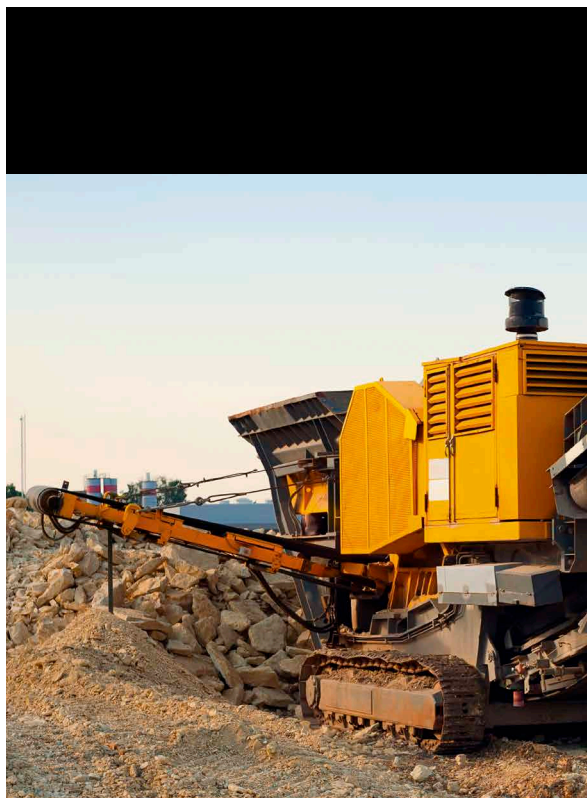


ROLLWAY®



ROLLWAY®

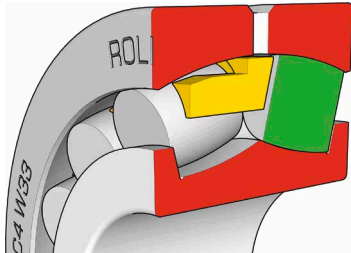
**Vibration screen
bearings**



REGAL

Design Overview Table

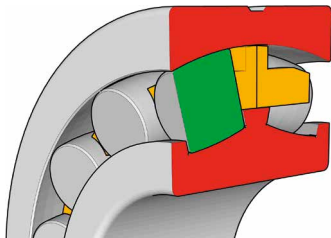
223XX VS C4 F80 W33



- VS:
 - Single piece solid brass cage, guided on the outer ring raceway.
 - Asymmetric position of the rollers in the cage.
 - The inner ring has 2 flanges.
 - Range: from 40mm to 150mm bore diameter.

- MA:
 - Two piece brass cage, guided on the outer ring raceway.
 - The inner ring has 3 flanges.
 - Range: over 150mm to 200mm bore diameter.

223XX MA C4 F80 W33



- K
 - Tapered bore.
- C4:
 - Specific radial clearance field.
- F80:
 - Reduced tolerance field for bore and outer diameter.
- W33
 - Lubrication groove and 3 holes in the outer ring.
- Typical application: crushers, feeders, vibration tables, mining process equipment.

F80 Tolerance						C4 Radial clearance		
d	Min	Max	D	Min	Max	d	Min	Max
40	0	-0.007	90	-0.005	-0.013	40	0.085	0.100
45			100			45		
50			110			50		
55		-0.009	120		-0.018	55	0,100	0,120
60			130			60		
65			140			65		
70			150			70	0,120	0,145
75			160			75		
80		-0.012	170	-0.010	-0.023	80	0,150	0,180
85			180			85		
90			190			90		
95			200			95	0,180	0,210
100			215			100		
110			240			110		
120		-0.015	260	-0.013	-0.028	120	0,205	0,240
130			280			130		
140			300			140	0,240	0,280
150			320			150		
160			340			160		
170		-0.018	360			170	0,260	0,310
180			380			180		
190			400			190	0,285	0,340

Spherical Roller Bearing for Vibration Screen application

ROLLWAY®

DATA 223XX – VS C4 F80 W33 / MA C4 F80 W33

Type	Cage	Dimensions				Load ratings		Speed		Calculation factors				Weight
		d	D	B	rs	Cr	Cor	rpm	rpm	e	Y1	Y2	Y0	kg
22308	VS	40	90	33	1,5	125	135	5300	6300	0,39	1,8	2,6	1,7	1,05
22309	VS	45	100	36	1,5	153	179	4800	5800	0,37	1,8	2,7	1,8	1,41
22310	VS	50	110	40	2,0	193	226	4600	5600	0,37	1,8	2,7	1,8	1,91
22311	VS	55	120	43	2,0	226	268	4000	4800	0,36	1,9	2,8	1,8	2,37
22312	VS	60	130	46	2,1	262	313	3800	4400	0,36	1,9	2,8	1,8	2,94
22313	VS	65	140	48	2,1	285	330	3600	4200	0,35	1,9	2,9	1,9	3,67
22314	VS	70	150	51	2,1	340	420	3600	4000	0,34	2,0	2,9	1,9	4,39
22315	VS	75	160	55	2,1	380	475	3000	3600	0,35	2,0	2,9	1,9	5,35
22316	VS	80	170	58	2,1	420	535	2800	3400	0,34	2,0	2,9	1,9	6,41
22317	VS	85	180	60	3,0	462	591	2500	3200	0,34	2,0	3,0	2,0	7,47
22318	VS	90	190	64	3,0	530	677	2600	3000	0,34	2,0	3,0	2,0	8,56
22319	VS	95	200	67	3,0	568	744	2200	2800	0,34	2,0	3,0	2,0	10,31
22320	VS	100	215	73	3,0	670	880	2200	2600	0,34	2,0	2,9	1,9	13,21
22322	VS	110	240	80	3,0	800	1060	1800	2200	0,35	2,0	2,9	1,9	18,01
22324	VS	120	260	86	3,0	930	1230	1700	2000	0,34	2,0	3,0	2,0	22,49
22326	VS	130	280	93	4,0	1080	1465	1600	1900	0,33	2,0	3,0	2,0	27,63
22328	VS	140	300	102	4,0	1240	1720	1400	1500	0,35	2,0	2,9	1,9	35,92
22330	VS	150	320	108	4,0	1400	1940	1000	1300	0,38	1,7	2,6	1,7	44,3
22332	MA	160	340	114	4,0	1520	2160	900	1200	0,37	1,8	2,7	1,8	50,08
22334	MA	170	360	120	4,0	1690	2380	850	1100	0,37	1,8	2,7	1,8	60,1
22336	MA	180	380	126	4,0	1900	2700	850	1100	0,37	1,8	2,7	1,8	71,8
22338	MA	190	400	132	5,0	2060	2920	750	1000	0,36	1,8	2,7	1,8	78,5
22340	MA	200	420	138	5,0	1910	2750	670	900	0,36	1,8	2,8	1,8	97,28

VS for d≤150mm / MA for d≥150mm

REGAL

Regal Beloit Belgium NV
Power Transmission Solutions
Heiveldekens 16
2550 Kontich, Belgium
E info@rollway-bearing.be
T +32(0)3 457 68 70
F +32(0)3 457 51 38
www.regalpts.com

Authorized Dealer:



REGAL

